



A large, detailed illustration of a prehistoric landscape. In the foreground, three dinosaurs stand on a rocky outcrop: a large, reddish-brown Spinosaurus in the center, a smaller, feathered dinosaur to its left, and a Triceratops in front of it. In the background, a river flows through a lush green valley, with mountains and flying pterosaurs visible under a hazy sky.

# WALKING WITH DINOSAURS

SERIES PREMIERE

MON JUN 16 | 8p



Cascade PBS Ideas Festival



Grantchester on Masterpiece



Caregiving



# primetime picks



## Aida

FRI JUN 13 | 9p

Soprano Angel Blue makes her Met debut as Aida in this stunning new production. Set within ancient Egypt's gilded tombs and towering pyramids, Verdi's classic follows an Ethiopian princess torn between love and country.

## MASTERPIECE

### Grantchester

SEASON 10 PREMIERE

SUN JUN 15 | 9p

Marathon Opportunity

The new vicar has found his place in Grantchester and a friend in Geordie, but romance proves complicated when Alphy must confront his past. Meanwhile, Geordie struggles with expectations for his son, and Cathy pursues career advancement with Mrs. Chapman's help.

*Stream all nine seasons anytime and enjoy a marathon viewing of Season 10 on premiere night on the Cascade PBS app.*



## AMERICAN MASTERS

### Janis Ian: Breaking Silence

FRI JUN 20 | 9p

Take a captivating journey through the life of trailblazing artist Janis Ian, who at just 15 shook the world with "Society's Child." Ian overcame early-success stigma, homophobia and industry misogyny while creating influential music and collaborating with legends including Jimi Hendrix, Janis Joplin, Dolly Parton and Willie Nelson.



### Caregiving

TUE JUN 24 | 9p

Witness the hidden struggles of those who put others first. This compelling documentary follows diverse caregivers facing family challenges, mental health issues and resource limitations while advocating for recognition. Through intimate stories and expert perspectives, the film exposes America's care crisis and the urgent need for change.



COVER PHOTO COURTESY OF BBC AND LOLA POST PRODUCTION.


SMALLER PHOTOS COURTESY OF KUDOS AND MASTERPIECE; WETA AND ARK MEDIA.

PAGE 2 PHOTOS COURTESY OF KEN HOWARD AND MET OPERA; KUDOS AND MASTERPIECE; PETER CUNNINGHAM; WETA AND ARK MEDIA.



A STORY 250 YEARS IN THE MAKING

# We the People




## THE AMERICAN REVOLUTION

A FILM BY  
KEN BURNS, SARAH BOTSTEIN & DAVID SCHMIDT

### An Evening with Ken Burns

MON JUL 14 | 7p | McCaw Hall



Join Ken Burns and Cascade PBS at Seattle's McCaw Hall to preview Burns' new film, *The American Revolution*. The event will feature musical performances, selections from the documentary, and a behind-the-scenes conversation with Ken Burns, his co-director David Schmidt and historians featured in the film.

**Tickets on sale June 1, starting at \$40.**  
Find more information at [CascadePBS.org/Events](https://www.CascadePBS.org/Events)



PHOTO COURTESY OF STEPHANIE BERGER.

For the most up-to-date episode information, scan this QR code or visit [CascadePBS.org/Schedule](https://www.CascadePBS.org/Schedule).



### Cascade PBS Earns 13 Emmy® Nominations!

We're proud to be recognized by the Northwest Chapter of NATAS with nominations in categories including Overall Excellence. Winners announced June 7. Stream award-nominated episodes on the Cascade PBS app.

## ALASKA CRUISES

EMBARK ON AN UNFORGETTABLE JOURNEY

[NWNNav.com](https://www.NWNNav.com)

**Book Now for 2025**

## SUMMER AT CENTRUM

9 FESTIVALS 34 EVENTS |  
250 ARTISTS ONE  
EXTRAORDINARY PLACE  
FORT WORDEN STATE PARK

Laurie Lewis




**TICKETS ON SALE NOW**  
TICKETS ONLINE AT [CENTRUM.ORG](https://www.CENTRUM.ORG)  
OR CALL (800) 746-1982

Tickets for youth under 18 free with advance reservation!



# what to watch JUN 1-7

## Estate Planning Made Easy

Join Cascade PBS and experts from Washington Trust Bank for a complimentary, informative estate-planning seminar. Space is limited.

**THU JUN 5 | 1-3p**  
**Cascade PBS**  
**316 Broadway**  
**Seattle, WA 98122**



Scan the QR code with your phone's camera to register, or call us at **206.443.6763**.

### 1 SUNDAY

#### 6-11a CHILDREN'S PROGRAMS

- 11:00** **Cooking with Legends: Lidia Bastianich & Jacques Pépin** (Repeats 6/28)
- 12:30** **America's Test Kitchen Celebrates 25 Years** ®
- 2:00** **Rick Steves' Europe** Great German Cities. ®
- 4:00** **The Very Best of Mossback's Northwest** ®
- 6:00** **PBS News Weekend**
- 6:30** **All Creatures Great and Small: The Wisdom of the Dales** ®
- 8:00** **Cozy Mysteries of Masterpiece Mystery** (Repeats 6/14)
- 9:30** **Wolf Hall: The Mirror and the Light: Reflections**
- 11:00** **Memory Makeover with Daniel Amen, MD** ®

### 2 MONDAY

#### 5a-12p CHILDREN'S PROGRAMS

- 12:00** **Rick Steves' Heart of Italy** ®
- 2:00** **Easy Yoga: The Secret to Strength and Balance with Peggy Cappy** ®
- 3:00** **PBS News Hour**
- 4:00** **Amanpour & Company** ®
- 5:00** **BBC News The Context**
- 5:30** **BBC News America**
- 6:00** **PBS News Hour** ®
- 7:00** **50 Years with Peter, Paul and Mary** ®
- 9:00** **All New Rock, Pop and Doo Wop (My Music Presents)** ®
- 11:00** **Amanpour & Company**

### 3 TUESDAY

#### 5a-12p CHILDREN'S PROGRAMS

- 12:00** **Ken Burns: The National Parks** ®
- 1:30** **Memory Makeover with Daniel Amen, MD** ®
- 3:00** **PBS News Hour**
- 4:00** **Amanpour & Company** ®
- 5:00** **BBC News The Context**
- 5:30** **BBC News America**
- 6:00** **PBS News Hour** ®
- 7:00** **Rick Steves' Experiencing Europe** ®
- 8:30** **Henry Louis Gates, Jr.: The Fabric of America** ®
- 10:00** **Women of World War II: The Untold Stories** ®
- 11:30** **Amanpour & Company**



THESE SEMINARS ARE INTENDED TO BE INFORMATIONAL AND EDUCATIONAL IN NATURE. WE ARE NOT OFFERING PROFESSIONAL TAX, LEGAL OR ACCOUNTING ADVICE. FOR SPECIFIC ADVICE ABOUT THE EFFECT OF ANY PLANNING CONCEPT ON YOUR TAX OR FINANCIAL SITUATION OR ON YOUR ESTATE, PLEASE CONSULT YOUR OWN QUALIFIED PROFESSIONAL ADVISOR.



## Summer heats up with all-new episodes from PBS KIDS favorites!

PBS KIDS believes the world is full of possibilities, and so is every child. Your support makes PBS KIDS free and accessible to children and families throughout our region, providing crucial early learning opportunities and beloved programs that help every child thrive in school and life.

Find up-to-the-minute listings at **[CascadePBS.org/Schedule/Kids](http://CascadePBS.org/Schedule/Kids)**.

IMAGE COURTESY OF FRED ROGERS PRODUCTIONS.



## 4 WEDNESDAY

5a–12p **CHILDREN'S PROGRAMS**

- 12:00 **Great Performances**  
Kiss Me, Kate. Ⓢ
- 3:00 **PBS News Hour**
- 4:00 **Amanpour & Company** Ⓢ
- 5:00 **BBC News The Context**
- 5:30 **BBC News America**
- 6:00 **PBS News Hour** Ⓢ
- 7:00 **Nature** Hummingbirds of Hollywood. Ⓢ
- 8:30 **Nature** Museum Alive with David Attenborough. Ⓢ
- 10:00 **Ken Burns: One Nation, Many Stories** Ⓢ
- 11:30 **Amanpour & Company**

## 5 THURSDAY

5a–12p **CHILDREN'S PROGRAMS**

- 12:00 **Rick Steves' Experiencing Europe** Ⓢ
- 1:30 **Rick Steves Mighty Alps** Ⓢ
- 3:00 **PBS News Hour**
- 4:00 **Amanpour & Company** Ⓢ
- 5:00 **BBC News The Context**
- 5:30 **BBC News America**
- 6:00 **PBS News Hour** Ⓢ
- 7:00 **Rick Steves' Europe**  
Why We Travel. Ⓢ
- 8:00 **Warren** (S1 EPS 4 & 5 of 6)
- 9:00 **Sherlock on Masterpiece**  
The Abominable Bride. Ⓢ
- 11:00 **Amanpour & Company**

## 6 FRIDAY

5a–12p **CHILDREN'S PROGRAMS**

- 12:00 **Rick Steves Iceland** Ⓢ
- 1:00 **Mossback's Northwest Special** Ⓢ Ⓢ
- 1:30 **Origins: The Last Reefnetters** (S3 EP 5/5) Ⓢ Ⓢ
- 1:40 **Black Arts Legacies**  
Dance. (S4 EP 1/5) Ⓢ Ⓢ
- 1:50 **Black Arts Legacies**  
Visual Art. (S4 EP 2/5) Ⓢ
- 2:00 **Rick Steves' Europe**  
Why We Travel. Ⓢ
- 3:00 **PBS News Hour**
- 4:00 **Amanpour & Company** Ⓢ
- 4:58 **BBC News The Context**
- 5:27 **BBC News America**
- 5:55 **The Newsfeed** Ⓢ
- 6:00 **PBS News Hour** Ⓢ
- 7:00 **Washington Week**  
with the Atlantic
- 7:30 **Firing Line** with Margaret Hoover
- 8:00 **60s and 70s Soul Celebration** (My Music Presents) Ⓢ
- 11:00 **Amanpour & Company**

## 7 SATURDAY

6–10:30a **CHILDREN'S PROGRAMS**

- 10:30 **Rick Steves' Experiencing Europe** Ⓢ
- 12:00 **Classical Rewind**  
(My Music Presents) Ⓢ
- 1:30 **Great Performances**  
Andrea Bocelli 30th – The Celebration. Ⓢ
- 3:30 **Tony Bennett: Viva Duets** Ⓢ
- 4:30 **Engelbert Humperdinck: Live in Hawaii**  
(My Music Presents) Ⓢ
- 6:00 **PBS News Weekend**
- 6:30 **Best of the '60s**  
(My Music Presents) Ⓢ
- 9:00 **Bruce Springsteen & The E Street Band: No Nukes**
- 11:00 **Tommy Emmanuel (CGP): Live at the Sydney Opera House**



### Black Arts Legacies FRIDAYS | 1:50p

Cascade PBS celebrates Seattle's influential Black artists through digital portraits spanning generations—from 1940s gallery curator Zoë Dusanne to 1970s television producer Nate Long to contemporary ballerina Amanda Morgan. Our expanding archive adds six new profiles this season.

View the full collection of artists at **BlackArtsLegacies.com**.

PHOTO COURTESY OF MERON MENGHISTAB.



# WALKING WITH DINOSAURS

## The Prehistoric Drama Unfolds Over Three Nights!

Each episode tells the story of an individual dinosaur whose remains are currently being unearthed by the world's leading dinosaur hunters.

**MON JUN 16**

**The Orphan | 8p**

**The River Dragon | 9p**



**The Orphan**

An orphaned baby Triceratops must outwit a deadly T. rex. Can she survive?



**The River Dragon**

A Spinosaurus struggles to keep his family alive in the deadliest place in Earth's history.

**TUE JUN 17**

**Band of Brothers | 8p**

**The Pack | 9p**



**Band of Brothers**

Follow a gang of armored dinosaurs as they battle to reach adulthood, pursued by ferocious raptors.



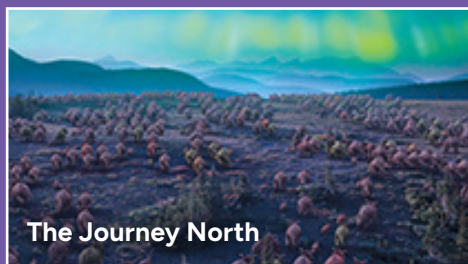
**The Pack**

A young Albertosaurus, a relative of T. rex, earns her place in a fierce hunting pack.

**WED JUN 18**

**The Journey North | 8p**

**Island of Giants | 9p**



**The Journey North**

Pachyrhinosaurus herds face deadly predators during their perilous migration north.



**Island of Giants**

Discover the story of Lusotitan, one of the largest dinosaurs ever, as it embarks on a quest for love.

PHOTOS COURTESY OF BBC AND LOLA POST PRODUCTION.

# what to watch JUN 8–14

## 8 SUNDAY

### 6–11a CHILDREN'S PROGRAMS

- 11:00 **The Nosh with Rachel Belle** (S2 EPS 1–3 of 8) Ⓜ Ⓢ
- 11:30 **Baking with Julia**
- 12:00 **Lidia's Kitchen**
- 12:30 **Kevin Belton's Cookin' Louisiana**
- 1:00 **Cook's Country**
- 1:30 **Christopher Kimball's Milk Street Television** Ⓜ
- 2:00 **America's Test Kitchen**
- 2:30 **Homemade Live!** Ⓜ
- 3:00 **Mossback's Northwest Special** Ⓜ Ⓢ
- 3:30 **Out & Back with Alison Mariella Désir Special** Ⓜ Ⓢ
- 4:00 **Black to the Bigs** Ⓜ
- 4:47 **Black Arts Legacies Dance**. (S4 EP 1/5) Ⓜ Ⓢ
- 5:00 **Iconic America: Our Symbols and Stories with David Rubenstein** Fenway Park. Ⓜ (ST)
- 6:00 **PBS News Weekend**
- 6:30 **Grantchester on Masterpiece** (S9 EPS 1–6 of 8) Ⓜ

## 9 MONDAY

### 5a–12p CHILDREN'S PROGRAMS

- 12:00 **Antiques Roadshow** Ⓜ
- 1:00 **Antiques Roadshow** Ⓜ
- 2:00 **Black to the Bigs** Ⓜ
- 3:00 **PBS News Hour**
- 4:00 **Amanpour & Company** Ⓜ
- 5:00 **BBC News The Context**
- 5:30 **BBC News America**
- 6:00 **PBS News Hour** Ⓜ
- 7:00 **Antiques Roadshow** Ⓜ
- 8:00 **Antiques Roadshow** Ⓜ
- 9:00 **Antiques Roadshow** Ⓜ
- 10:00 **PBS Program**
- 11:00 **Amanpour & Company**

## 10 TUESDAY

### 5a–12p CHILDREN'S PROGRAMS

- 12:00 **Antiques Roadshow** Ⓜ
- 1:00 **Antiques Roadshow** Ⓜ
- 2:00 **Asahel: The Curtis Collection** Ⓜ Ⓢ
- 2:30 **Art by Northwest** (EPS 3 & 4 of 4) Ⓜ Ⓢ
- 2:50 **Origins: The Last Reefnetters** (S3 EP 4/5) Ⓜ Ⓢ
- 3:00 **PBS News Hour**
- 4:00 **Amanpour & Company** Ⓜ
- 5:00 **BBC News The Context**
- 5:30 **BBC News America**
- 6:00 **PBS News Hour** Ⓜ
- 7:00 **Ice Mermaid: Cold Resolve** Ⓜ
- 7:53 **Caregiving Shorts**
- 8:00 **Finding Your Roots with Henry Louis Gates, Jr.** Leslie Odom, Jr., and Nathan Lane. Ⓜ
- 9:00 **American Experience** Surviving the Dust Bowl. Ⓜ
- 10:00 **FRONTLINE**
- 11:00 **Amanpour & Company**

## 11 WEDNESDAY

### 5a–12p CHILDREN'S PROGRAMS

- 12:00 **Antiques Roadshow** Ⓜ
- 1:00 **Finding Your Roots with Henry Louis Gates, Jr.** Leslie Odom, Jr., and Nathan Lane. Ⓜ
- 2:00 **Ice Mermaid: Cold Resolve** Ⓜ
- 2:50 **Origins: The Last Reefnetters** (S3 EP 1/5) Ⓜ Ⓢ
- 3:00 **PBS News Hour**
- 4:00 **Amanpour & Company** Ⓜ
- 5:00 **BBC News The Context**
- 5:30 **BBC News America**
- 6:00 **PBS News Hour** Ⓜ
- 7:00 **Cascade PBS Ideas Festival SEASON PREMIERE** (EP 1/8) Ⓢ
- 7:30 **Samantha Brown's Places to Love** Jerusalem, Israel – Part One. Ⓜ
- 8:00 **Nature** The Ocean's Greatest Feast. Ⓜ
- 9:00 **NOVA** Extreme Airport Engineering. Ⓜ
- 10:00 **NOVA** London Super Tunnel. Ⓜ
- 11:00 **Amanpour & Company**

## 12 THURSDAY

### 5a–12p CHILDREN'S PROGRAMS

- 12:00 **Antiques Roadshow** Ⓜ
- 1:00 **Nature** The Ocean's Greatest Feast. Ⓜ
- 2:00 **NOVA** Extreme Airport Engineering. Ⓜ
- 3:00 **PBS News Hour**
- 4:00 **Amanpour & Company** Ⓜ
- 5:00 **BBC News The Context**
- 5:30 **BBC News America**
- 6:00 **PBS News Hour** Ⓜ
- 7:00 **Cascade PBS Ideas Festival** (EP 2/8) Ⓢ
- 7:30 **Ask This Old House** Ⓜ
- 8:00 **Warren** (S1 EP 6/6)
- 8:30 **You Are Cordially Invited** Ⓜ
- 9:00 **Midsomer Murders** (S6 EP 2/5) Ⓜ
- 10:00 **Miss Fisher's Murder Mysteries** (S2 EP 2/13) Ⓜ
- 11:00 **Amanpour & Company**

## 13 FRIDAY

### 5a–12p CHILDREN'S PROGRAMS

- 12:00 **Antiques Roadshow** Ⓜ
- 1:00 **Midsomer Murders** (S6 EP 2/5) Ⓜ
- 1:50 **Black Arts Legacies Music**. (S4 EP 3/5) Ⓢ
- 2:00 **Miss Fisher's Murder Mysteries** (S2 EP 2/13) Ⓜ
- 3:00 **PBS News Hour**
- 4:00 **Amanpour & Company** Ⓜ
- 4:58 **BBC News The Context**
- 5:27 **BBC News America**
- 5:55 **The Newsfeed** Ⓜ
- 6:00 **PBS News Hour** Ⓜ
- 7:00 **Washington Week with the Atlantic**
- 7:30 **Firing Line with Margaret Hoover**
- 8:00 **Hope Street** (S3 EP 1/15) Ⓜ
- 9:00 **Great Performances at the Met Aida**. See page 2.
- 12:00 **Amanpour & Company**

## 14 SATURDAY

### 6–10:30a CHILDREN'S PROGRAMS

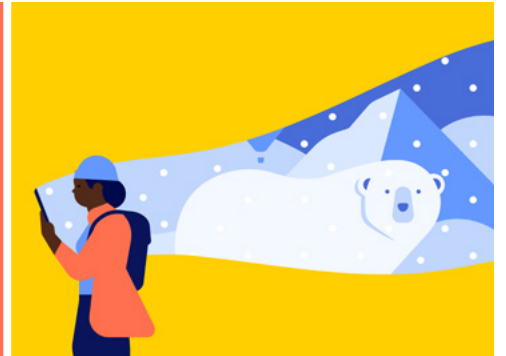
- 10:30 **Memory Makeover with Daniel Amen, MD** Ⓜ
- 12:30 **All Creatures Great and Small on Masterpiece** (S5 EPS 1 & 2 of 7) Ⓜ
- 3:00 **Cozy Mysteries of Masterpiece Mystery** Ⓜ
- 4:30 **Grantchester: Investigating Life's Mysteries** Ⓜ
- 6:00 **PBS News Weekend**
- 6:30 **Variety Studio: Actors on Actors** (S22 EP 1/4)
- 7:00 **Eagles of Mercy** Ⓜ
- 8:00 **The Vietnam War** (EP 8/10) Ⓜ (ST)
- 10:00 **Prohibition** (EP 1/3) Ⓜ (ST)



**SEASON PREMIERE**  
**WED JUN 11 | 7p**

Journalists, newsmakers and innovators from around the U.S. talk about the issues that are animating our cultural conversations.





## Be a Hero for Public Media

For 70 years, members like you have made Cascade PBS a trusted community resource. Your special gift will help secure an essential public service so many in our community depend on.



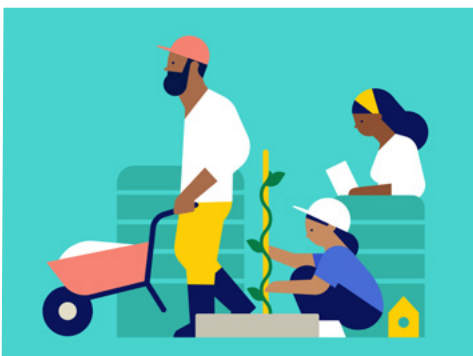
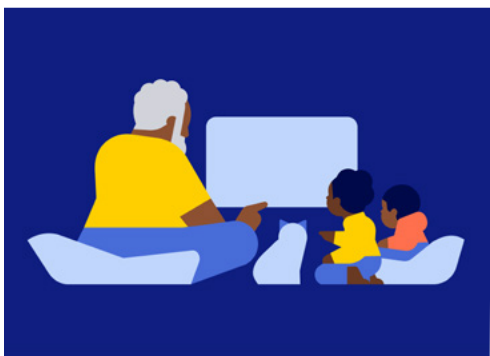
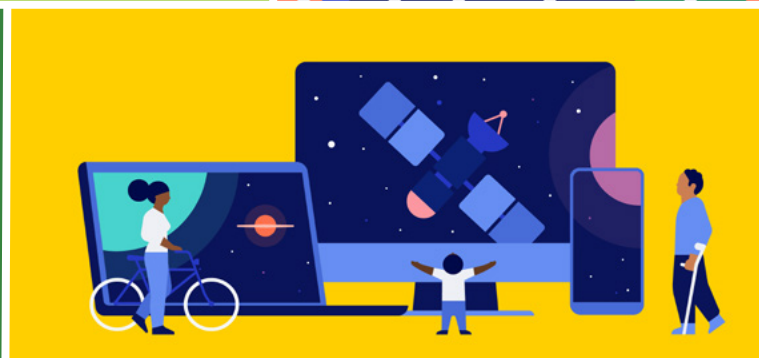
**Make a gift that will have a heroic impact in our community—one that's truly needed, especially now.**



## Give Today

Your donation before June 30 is vital and will help ensure trusted news and inspiring storytelling for all in our community.

**[CascadePBS.org/DonateNow](https://CascadePBS.org/DonateNow)**



## Did You Know?

Cascade PBS is the first classroom for many children across our region. Your support will deliver quality educational content that's free and accessible for all.



# what to watch JUN 15–21

## 15 SUNDAY

- 6–11a **CHILDREN'S PROGRAMS**
- 11:00 **The Nosh with Rachel Belle** Ⓢ
- 11:09 **Baking with Julia**
- 11:38 **Lidia's Kitchen** Ⓢ
- 12:05 **Kevin Belton's Cookin' Louisiana**
- 12:32 **Cook's Country** Ⓢ
- 1:00 **Christopher Kimball's Milk Street Television** Ⓢ
- 1:30 **America's Test Kitchen** Ⓢ
- 2:00 **Rick Steves' Europe** Ⓢ
- 4:00 **Grantchester on Masterpiece** (S9 EPS 7 & 8 of 8) Ⓢ
- 6:00 **PBS News Weekend**
- 6:30 **Have Guitar Will Travel World** (EP 1/6) **SERIES PREMIERE**
- 7:00 **Professor T** (S1 EP 1/6) Ⓢ
- 8:00 **Patience** (EP 1/6) **SERIES PREMIERE** (Repeats 6/16)
- 9:00 **Grantchester on Masterpiece** (S10 EP 1/8) **SEASON PREMIERE** (Repeats 6/16) *See page 2.*
- 10:00 **Atlantic Crossing on Masterpiece** (EP 1/8) Ⓢ

## 16 MONDAY

- 5a–12p **CHILDREN'S PROGRAMS**
- 12:00 **Antiques Roadshow** Ⓢ
- 1:00 **Grantchester on Masterpiece** (S10 EP 1/8) Ⓢ
- 2:00 **Patience** (EP 1/6) Ⓢ
- 3:00 **PBS News Hour**
- 4:00 **Amanpour & Company** Ⓢ
- 5:00 **BBC News The Context**
- 5:30 **BBC News America**
- 6:00 **PBS News Hour** Ⓢ
- 7:00 **Cascade PBS Ideas Festival** (EP 3/8) Ⓢ
- 7:30 **Weathered: Earth's Extremes** (EP 1/6) **SERIES PREMIERE**
- 8:00 **Walking with Dinosaurs The Orphan.** (EP 1/6) **SERIES PREMIERE** (Repeats 6/17, 6/25 and 6/26) *See page 6.*
- 9:00 **Walking with Dinosaurs The River Dragon.** (EP 2/6) (Repeats 6/17) *See page 6.*
- 10:00 **Nature Museum Alive with David Attenborough.** Ⓢ
- 11:00 **Amanpour & Company**

## 17 TUESDAY

- 5a–12p **CHILDREN'S PROGRAMS**
- 12:00 **Antiques Roadshow** Ⓢ
- 1:00 **Walking with Dinosaurs** (EP 1/6) Ⓢ
- 2:00 **Walking with Dinosaurs** (EP 2/6) Ⓢ
- 3:00 **PBS News Hour**
- 4:00 **Amanpour & Company** Ⓢ
- 5:00 **BBC News The Context**
- 5:30 **BBC News America**
- 6:00 **PBS News Hour** Ⓢ
- 7:00 **Cascade PBS Ideas Festival** (EP 4/8) Ⓢ
- 7:30 **Weathered: Earth's Extremes** (EP 2/6)
- 8:00 **Walking with Dinosaurs Band of Brothers.** (EP 3/6) (Repeats 6/18) *See page 6.*
- 9:00 **Walking with Dinosaurs The Pack.** (EP 4/6) (Repeats 6/18) *See page 6.*
- 10:00 **Nature Attenborough and the Jurassic Sea Monster.** Ⓢ
- 11:00 **Amanpour & Company**

## 18 WEDNESDAY

- 5a–12p **CHILDREN'S PROGRAMS**
- 12:00 **Antiques Roadshow** Ⓢ
- 1:00 **Walking with Dinosaurs** (EP 3/6) Ⓢ
- 2:00 **Walking with Dinosaurs** (EP 4/6) Ⓢ
- 3:00 **PBS News Hour**
- 4:00 **Amanpour & Company** Ⓢ
- 5:00 **BBC News The Context**
- 5:30 **BBC News America**
- 6:00 **PBS News Hour** Ⓢ
- 7:00 **Cascade PBS Ideas Festival** (EP 5/8) Ⓢ
- 7:30 **Samantha Brown's Places to Love Jerusalem, Israel – Part Two.** Ⓢ
- 8:00 **Walking with Dinosaurs The Journey North.** (EP 5/6) (Repeats 6/19) *See page 6.*
- 9:00 **Walking with Dinosaurs Island of Giants.** (EP 6/6) (Repeats 6/19) *See page 6.*
- 10:00 **NOVA Alaskan Dinosaurs.** Ⓢ
- 11:00 **Amanpour & Company**

## 19 THURSDAY

- 5a–12p **CHILDREN'S PROGRAMS**
- 12:00 **Antiques Roadshow** Ⓢ
- 1:00 **Walking with Dinosaurs** (EP 5/6) Ⓢ
- 2:00 **Walking with Dinosaurs** (EP 6/6) Ⓢ
- 3:00 **PBS News Hour**
- 4:00 **Amanpour & Company** Ⓢ
- 5:00 **BBC News The Context**
- 5:30 **BBC News America**
- 6:00 **PBS News Hour** Ⓢ
- 7:00 **Cascade PBS Ideas Festival** (EP 6/8) Ⓢ
- 7:30 **Ask This Old House** Ⓢ
- 8:00 **Doc Martin** (S6 1/8) Ⓢ
- 8:50 **Black Arts Legacies Dance.** (S4 EP 1/5) Ⓢ
- 9:00 **Midsomer Murders** (S6 EP 3/5) Ⓢ
- 9:55 **Caregiving Shorts**
- 10:03 **Miss Fisher's Murder Mysteries** (S2 EP 3/13) Ⓢ
- 11:00 **Amanpour & Company**

## 20 FRIDAY

- 5a–12p **CHILDREN'S PROGRAMS**
- 12:00 **Antiques Roadshow** Ⓢ
- 1:00 **Midsomer Murders** (S6 EP 3/5) Ⓢ
- 1:50 **Black Arts Legacies Visual Art.** (S4 EP 4/5) Ⓢ
- 2:00 **Miss Fisher's Murder Mysteries** (S2 EP 3/13) Ⓢ
- 3:00 **PBS News Hour**
- 4:00 **Amanpour & Company** Ⓢ
- 4:58 **BBC News The Context**
- 5:27 **BBC News America**
- 5:55 **The Newsfeed** Ⓢ
- 6:00 **PBS News Hour** Ⓢ
- 7:00 **Washington Week with the Atlantic**
- 7:30 **Firing Line with Margaret Hoover**
- 8:00 **Hope Street** (S3 EP 2/15) Ⓢ
- 9:00 **American Masters Janis Ian: Breaking Silence.** *See page 2.*
- 11:00 **Amanpour & Company**

## 21 SATURDAY

- 6–10:30a **CHILDREN'S PROGRAMS**
- 10:30 **The Brain-Gut Connection with Dr. Emeran Mayer** Ⓢ
- 12:00 **All Creatures Great and Small on Masterpiece** (S5 EPS 3 & 4 of 7) Ⓢ
- 2:30 **50 Years with Peter, Paul and Mary** Ⓢ
- 4:30 **Burt Bacharach: A Life in Song** Ⓢ
- 6:00 **PBS News Weekend**
- 6:30 **Variety Studio: Actors on Actors** (S22 EP 2/4)
- 7:10 **Origins: Refuge After War** (EPS 1–5 of 5) Ⓢ
- 8:00 **The Vietnam War** (EP 9/10) Ⓢ (ST)
- 10:00 **Prohibition** (EP 2/3) Ⓢ (ST)



### Patience

**SERIES PREMIERE**

Sun Jun 15 | 8p

**Marathon Opportunity**

Detective Bea Metcalf forms an unlikely duo with young autistic police archivist Patience Evans.

*Stream the full series after premiere.*

PHOTO COURTESY OF EAGLE EYE DRAMA.

# what to watch JUN 22–30

## 22 SUNDAY

6–11a **CHILDREN'S PROGRAMS**

- 11:00 **The Nosh with Rachel Belle** Ⓢ
- 11:09 **Baking with Julia**
- 11:38 **Lidia's Kitchen** Ⓢ
- 12:05 **Kevin Belton's Cookin' Louisiana**
- 12:32 **Cook's Country** Ⓢ
- 1:00 **Christopher Kimball's Milk Street Television** Ⓢ
- 1:30 **America's Test Kitchen** Ⓢ
- 2:00 **Rick Steves' Europe** Ⓢ
- 4:00 **Magpie Murders on Masterpiece** (EPS 1 & 2 of 6) Ⓢ
- 5:53 **Caregiving Shorts**
- 6:00 **PBS News Weekend**
- 6:30 **Have Guitar Will Travel**  
**World** Myths & Monsters of the Scottish Highlands. (EP 2/6)
- 7:00 **Professor T** (S1 EP 2/6) Ⓢ
- 8:00 **Patience** (EP 2/6) (Repeats 6/23)
- 9:00 **Grantchester on Masterpiece** (S10 EP 2/8) Repeats 6/23)
- 10:00 **Atlantic Crossing on Masterpiece** (EP 2/8) Ⓢ
- 11:00 **Around the World in 80 Days on Masterpiece** (EP 2/5) Ⓢ

## 23 MONDAY

5a–12p **CHILDREN'S PROGRAMS**

- 12:00 **Antiques Roadshow** Ⓢ
- 1:00 **Grantchester on Masterpiece** (S10 EP 2/8) Ⓢ
- 2:00 **Patience** (EP 2/6) Ⓢ
- 3:00 **PBS News Hour**
- 4:00 **Amanpour & Company** Ⓢ
- 5:00 **BBC News The Context**
- 5:30 **BBC News America**
- 6:00 **PBS News Hour** Ⓢ
- 7:00 **Cascade PBS Ideas Festival** (EP 7/8) Ⓢ
- 7:30 **Weathered: Earth's Extremes** (EP 3/6)
- 8:00 **Antiques Roadshow** Ⓢ
- 9:00 **Antiques Roadshow** Ⓢ
- 10:00 **POV**
- 11:00 **Amanpour & Company**

## 24 TUESDAY

5a–12p **CHILDREN'S PROGRAMS**

- 12:00 **Antiques Roadshow** Ⓢ
- 1:00 **Antiques Roadshow** Ⓢ
- 2:00 **Art by Northwest** (EPS 1 & 2 of 4) Ⓢ
- 2:20 **Origins: The Last Reefnetters** (EPS 2–5 of 5) Ⓢ
- 3:00 **PBS News Hour**
- 4:00 **Amanpour & Company** Ⓢ
- 5:00 **BBC News The Context**
- 5:30 **BBC News America**
- 6:00 **PBS News Hour** Ⓢ
- 7:00 **Cascade PBS Ideas Festival** (EP 8/8) Ⓢ
- 7:30 **Weathered: Earth's Extremes** (EP 4/6)
- 8:00 **Finding Your Roots with Henry Louis Gates, Jr.** Carol Burnett and Niecy Nash. Ⓢ
- 9:00 **Caregiving** (ST) See page 2.
- 11:00 **Amanpour & Company**

## 25 WEDNESDAY

5a–12p **CHILDREN'S PROGRAMS**

- 12:00 **Antiques Roadshow** Ⓢ
- 1:00 **Finding Your Roots with Henry Louis Gates, Jr.** Carol Burnett and Niecy Nash. Ⓢ
- 2:00 **Aging in America: Survive or Thrive**
- 3:00 **PBS News Hour**
- 4:00 **Amanpour & Company** Ⓢ
- 5:00 **BBC News The Context**
- 5:30 **BBC News America**
- 6:00 **PBS News Hour** Ⓢ
- 7:00 **Rick Steves' Europe** Art of Prehistoric Europe. Ⓢ
- 7:30 **Samantha Brown's Places to Love** Northern Costa Rica. Ⓢ
- 8:00 **Walking with Dinosaurs** (EP 1/6) Ⓢ
- 9:00 **Human Footprint** Shelf Life. **SEASON PREMIERE** (Repeats 6/26)
- 10:00 **NOVA** Great Mammoth Mystery. Ⓢ
- 11:00 **Amanpour & Company**



### Human Footprint

SEASON 2 PREMIERE

WED JUN 25 | 9p

Biologist Shane Campbell-Staton returns to travel the globe to explore our human footprint and to discover how the things we do reveal who we truly are.

*Passport members can stream Season 1 in the Cascade PBS app now.*

PHOTO COURTESY OF DAY'S EDGE PRODUCTIONS.



## 26 THURSDAY

## 5a–12p CHILDREN'S PROGRAMS

- 12:00 **Antiques Roadshow** ☼  
1:00 **Walking with Dinosaurs**  
(EP 1/6) ☼  
2:00 **Human Footprint**  
Shelf Life. ☼  
3:00 **PBS News Hour**  
4:00 **Amanpour & Company** ☼  
5:00 **BBC News The Context**  
5:30 **BBC News America**  
6:00 **PBS News Hour** ☼  
7:00 **This Old House** ☼  
7:30 **Ask This Old House** ☼  
8:00 **Doc Martin** (S6 EP 2/8) ☼  
8:50 **Black Arts Legacies**  
Visual Art. (S4 EP 2/5) ☼ ☼  
9:00 **Midsomer Murders**  
(S6 EP 4/5) ☼  
10:00 **Miss Fisher's Murder**  
**Mysteries** (S2 EP 4/13) ☼  
11:00 **Amanpour & Company**

## 27 FRIDAY

## 5a–12p CHILDREN'S PROGRAMS

- 12:00 **Antiques Roadshow** ☼  
1:00 **Midsomer Murders**  
(S6 EP 4/5) ☼  
1:50 **Black Arts Legacies**  
Theater. (S4 EP 5/5) ☼  
2:00 **Miss Fisher's Murder**  
**Mysteries** (S2 EP 4/13) ☼  
3:00 **PBS News Hour**  
4:00 **Amanpour & Company** ☼  
4:58 **BBC News The Context**  
5:27 **BBC News America**  
5:55 **The Newsfeed** ☼  
6:00 **PBS News Hour** ☼  
7:00 **Washington Week**  
with the Atlantic  
7:30 **Firing Line with**  
**Margaret Hoover**  
8:00 **Hope Street** (S3 EP 3/15) ☼  
9:00 **American Masters**  
Hannah Arendt:  
Facing Tyranny.  
10:30 **Secrets of the Dead**  
Mozart's Sister. ☼  
11:30 **Amanpour & Company**

## 28 SATURDAY

## 6–10:30a CHILDREN'S PROGRAMS

- 10:30 **Cooking with Legends:**  
**Lidia Bastianich &**  
**Jacques Pépin** ☼  
12:00 **All Creatures Great and**  
**Small on Masterpiece**  
(S5 EPS 5 & 6 of 7) ☼  
2:30 **Best of the '60s**  
(My Music Presents) ☼  
5:00 **Tony Bennett:**  
**Viva Duets** ☼  
6:00 **PBS News Weekend**  
6:30 **Variety Studio: Actors**  
**on Actors** (S22 EP 3/4)  
7:00 **Antiques Roadshow** ☼  
8:00 **The Vietnam War**  
(EP 10/10) ☼ (ST)  
10:00 **Prohibition** (EP 3/3) ☼ (ST)

## LEGEND

(CC) With few exceptions, programs are closed captioned.

(ST) Spanish Translation

☼ Repeat

☼ Cascade PBS production

(S8 EP 5/8) Season 8, Episode 5 of 8

☼ Cascade PBS Passport members will have the opportunity to stream the full season the night of the premiere.

This guide is accurate at press time.

Occasionally, Cascade PBS may change its schedule after the guide is printed. Up-to-date information is available at [CascadePBS.org/Schedule](http://CascadePBS.org/Schedule) and in our free weekly newsletter Cascade PBS This Week – sign up now at [CascadePBS.org/Newsletters](http://CascadePBS.org/Newsletters).

## CASCADE PBS

316 Broadway | Seattle, WA 98122

WEBSITE: [CascadePBS.org](http://CascadePBS.org)

Follow Cascade PBS on Facebook.

## DONOR AND AUDIENCE RELATIONS

For donations, premiums, address changes and programming information:

TOLL-FREE: 1.800.937.5287

Weekdays 9 a.m. – 5 p.m.

Web: [CustomerService@CascadePBS.org](mailto:CustomerService@CascadePBS.org)

Email: [CustomerService@CascadePBS.org](mailto:CustomerService@CascadePBS.org)

Cascade Public Media Tax ID:

91-1221895

## VIEWER GUIDE STAFF

PUBLISHER:

Don Wilcox

MANAGING EDITOR:

Andrea Engstrom

DESIGN TEAM:

Greg Cohen

Madeleine Pisaneschi

Rachel Sandoffsky

Steve Grundmeier

The *Cascade PBS Viewer Guide* (U.S. periodicals postage paid at Seattle, WA, and at additional mailing offices, WA; ISSN 1552-3179) is published monthly by Cascade Public Media, a not-for-profit organization, 316 Broadway, Seattle, WA 98122. ©2025 Cascade Public Media. All rights reserved. All registered trademarks and trademarks are the property of their respective owners. No part of this publication may be reproduced in any form without written consent from Cascade Public Media. Subscription is by a minimum contribution of \$45 to Cascade PBS, \$4.72 of which is the cost of the subscription to the *Cascade PBS Viewer Guide*.

U.S. POSTMASTER: Send address changes to Cascade PBS Viewer Guide, 316 Broadway, Seattle, WA 98122.

CANADIAN POSTMASTER: Canadian Publications Mail Product Sales Agreement No.: 40020990, Postage paid at Ottawa, ON. Return undeliverable Canadian addresses to: Cascade PBS Viewer Guide, 609 – 2818 Main Street, Vancouver, BC V5T 0C1.

FOR SUBSCRIPTION INFORMATION OR CHANGE OF ADDRESS, contact Cascade PBS, 316 Broadway, Seattle, WA 98122. Printed in the United States. The *Cascade PBS Viewer Guide* is printed on paper containing a total of 50% recycled fiber with a minimum of 10% post-consumer waste. All of the *Cascade PBS Viewer Guide* is recyclable.

## 29 SUNDAY

## 6–11a CHILDREN'S PROGRAMS

- 11:00 **The Nosh with**  
**Rachel Belle** ☼ ☼  
11:09 **Baking with Julia**  
11:38 **Lidia's Kitchen** ☼  
12:05 **Kevin Belton's Cookin'**  
**Louisiana**  
12:32 **Cook's Country** ☼  
1:00 **Christopher Kimball's**  
**Milk Street Television** ☼  
1:30 **America's Test Kitchen** ☼  
2:00 **Rick Steves' Europe** ☼  
4:00 **Magpie Murders on**  
**Masterpiece**  
(EPS 3 & 4 of 6) ☼  
6:00 **PBS News Weekend**  
6:30 **Have Guitar Will Travel**  
**World** (EP 3/6)  
7:00 **Professor T** (S1 EP 3/6) ☼  
8:00 **Patience** (EP 3/6)  
(Repeats 6/30)  
9:00 **Grantchester on**  
**Masterpiece** (S10 EP 3/8)  
(Repeats 6/30)  
10:00 **Atlantic Crossing on**  
**Masterpiece** (EP 3/8) ☼  
11:00 **Around the World in 80**  
**Days on Masterpiece**  
(EP 3/5) ☼

## 30 MONDAY

## 5a–12p CHILDREN'S PROGRAMS

- 12:00 **Antiques Roadshow** ☼  
1:00 **Grantchester on**  
**Masterpiece** (S10 EP 3/8) ☼  
2:00 **Patience** (EP 3/6) ☼  
3:00 **PBS News Hour**  
4:00 **Amanpour & Company** ☼  
5:00 **BBC News The Context**  
5:30 **BBC News America**  
6:00 **PBS News Hour** ☼  
7:00 **Antiques Roadshow** ☼  
8:00 **Antiques Roadshow** ☼  
9:00 **Antiques Roadshow** ☼  
10:00 **POV: Break the Game**  
11:00 **Amanpour & Company**



## AMERICAN MASTERS

Hannah Arendt:  
Facing Tyranny

FRI JUN 27 | 9p

A portrait of one of the 20th century's most influential political thinkers, who courageously confronted tyranny.

PHOTO COURTESY OF THE HANNAH ARENDT BLUCHER LITERARY TRUST.

Cascade PBS  
316 Broadway  
Seattle, WA 98122



## Voices of Pride: Stream LGBTQ+ History

This June, you can honor pioneers who shaped LGBTQ+ history and culture by streaming inspiring documentaries that feature revolutionary figures. *American Experience: Stonewall Uprising* follows the brave activists who launched the modern gay rights movement; *Great Performances: The Magic of Nureyev* features the dancer who defied boundaries both on and off stage; *American Masters: James Baldwin*; *The Price of the Ticket* profiles the great writer/activist; and *Fanny: The Right to Rock* reintroduces the rockers who shattered gender barriers.

### Watch Anytime, at Home or on the Go

Download our app on Roku, FireTV, AppleTV, iOS and Android. For more information, visit [CascadePBS.org/Apps](https://CascadePBS.org/Apps) or use your smartphone camera to access the QR code.



Find these titles and more at [CascadePBS.org/LGBTstories](https://CascadePBS.org/LGBTstories).